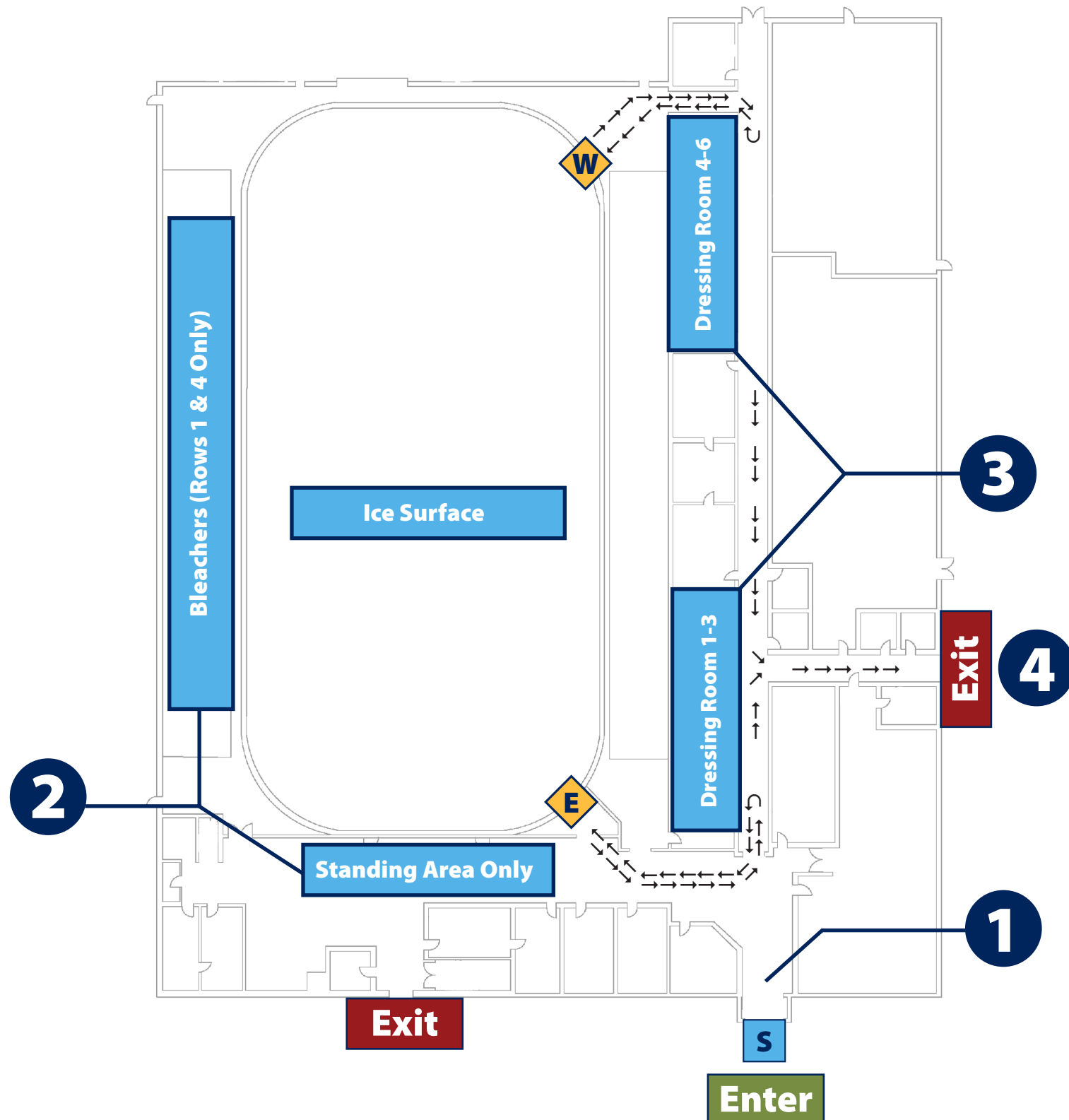


# Harrow & Colchester South Community Centre

## Ice Rink User's Guide

With the start of Stage 3 in our region, the Town of Essex will begin reopening indoor recreation facilities and ice rinks. These facilities will have new procedures in place for all visitors. Below is a step-by-step guide for rink users at the Harrow and Colchester South Community Centre. Players, participants, parents and guardians should arrive 20 minutes prior to the start of their activity. One parent/guardian per participant under the age of 18 will be allowed to enter the arena. All visitors are asked to maintain physical distance and practice hand hygiene using the available sanitizer dispensers.



### Enter

Prior to entering the facility, players/participants will go through a COVID Screening Tent **S** staffed by officials from the league or organization they are participating in. This Screening Tent will ask users if they are experiencing any symptoms or if they have had close contact with a confirmed or suspected case.

1

**Enter Arena and Go to Assigned Dressing Room:** Upon entering the arena, players and participants will look to the dressing room assignment board posted in the lobby to find which set of dressing rooms their team/group has been assigned.

2

**Parents & Guardians Go to Spectating Areas:** Players/participants under the age of 18 will be allowed one parent/guardian to attend the rink during activities. Parents/guardians can view the rink from the noted standing area or sit on the bleachers (rows 1 to 4 only). Please note, once parents/guardians have entered the arena, they should remain in the arena until the end of the activity.

3

**Use Dressing Rooms and Enter Ice Surface:** After using the dressing rooms, players/participants will enter the ice surface. Players/participants assigned to dressing rooms 1-3 will use the East Rink Access Point **E** and dressing rooms 4-5 will use the West Rink Access Point **W**.

4

**Exit Ice Surface and Arena:** After completing their on-ice activity players/participants will use the same access points to exit the ice surface and head back to their assigned dressing rooms. After using the dressing rooms, players/participants will exit the arena. Parents/guardians can exit from the alternate exit point noted on the map.